



Access Control Solutions

ZKAccess is a division of ZKTeco, which engages in access control products and solutions.

The product line includes IP-based standalone access control, networked access control panels, readers, tripod turnstiles and accessories, supplied with all necessary integration tools, SDK's and technical support to provide our business partners with complete solutions.

Standalone Access Control Terminals

With a large variety of access control solutions with fingerprint, facial and RFID identification, for doors, gates, and turnstiles, ZKTeco offers complete systems with which one can also manage employee Time & Attendance.

Indoor Fingerprint Identification Terminals

F8-T



- Fingerprint Capacity: 2.200
- Log Capacity: 50.000
- Touch sensitive keypad
- Communication: TCP/IP, RS485, RS232, USB-host
- Wiegand Input and Output
- Access Control Interface for Electric Lock, Door Sensor, Exit Button, Alarm, Door Bell

F9



- Fingerprint Capacity: 2.200
- Log Capacity: 50.000
- Communication: TCP/IP, RS485, RS232, USB-host
- Wiegand Input and Output
- Access Control Interface for Electric Lock, Door Sensor, Exit Button, Alarm, Door Bell

F18



- 2.4 inches TFT Color Screen
- Fingerprint Capacity: 3.000
- Log Capacity: 30.000
- Communication: TCP/IP, RS485, RS232, USB-host
- Wiegand Input and Output
- Access Control Interface for Electric Lock, Door Sensor, Exit Button, Alarm, Door Bell

X7

Easiest Access Control Terminal

All in one compact Access Control reader for small businesses, storage facilities or any off-limit area, the X7 connects directly to the doorlock and allows both fingerprint and PIN identification.



- Fingerprint Capacity: 500
- Card Capacity: 500
- Log Capacity : N/A
- Communication: N/A
- Password Capacity: 8 Groups
- Access Control Interface for Electric Lock, Door Sensor, Exit Button, Alarm, Door Bell

Outdoor Fingerprint Identification Terminals

In a continuously expanding security environment, ZKTeco offers state of the art waterproof, antivandalic access control terminals.

The range features infrared fingerprint sensors, proximity and PIN ID, external door relays, voice prompt etc...ZKTeco's outdoor terminals allow complete integration in a buildings access control network.



TF1600

IP65 Waterproof
Pull SDK
3.000
30.000
10.000
TCP/IP, RS485
Input and Output
Electric Lock, Door Sensor,
Exit Button, Alarm
Low temperature sensor

Casing
Communication Protocol
Fingerprint Capacity
Card Capacity
Log Capacity
Communication
Wiegand
Access Control Interface
Special features

TF1700

IP65 Waterproof
Standalone SDK
3.000
10.000
50.000
TCP/IP, RS485, USB-host
Input and Output
Electric Lock, Door Sensor,
Exit Button, Alarm, Door Bell
Optional 8000 FP (Pull SDK)



MA500

IP65 Waterproof Metal casing
Pull SDK
3.000
30.000
100.000
TCP/IP, RS485
Output
Electric Lock, Door Sensor,
Exit Button, Alarm

Casing
Communication Protocol
Fingerprint Capacity
Card Capacity
Log Capacity
Communication
Wiegand
Access Control Interface



MA300

IP65 Waterproof Metal casing
Standalone SDK
1.500
10.000
100.000
TCP/IP, RS485, USB-host
Input and Output
Electric Lock, Door Sensor,
Exit Button, Alarm



Facial Identification Terminals

- Face Capacity: 1.500 (1:N)
- Fingerprint Capacity: 2.000 (MultiBio700)
- ID Card Capacity: 10.000 (FAC700)
- Log Capacity: 100.000
- Wiegand Input and Output
- Communication: TCP/IP, RS485, RS232, USB-host
- Access Control Interface for Electric Lock, Door Sensor, Exit Button, Alarm, Doorbell

FAC700

MultiBio700



RFID Identification Terminals

- Card Capacity: 30.000
- Log Capacity: 50.000
- Communication: TCP/IP, RS485, RS232, USB-host
- Wiegand Input and Output
- Professional Time Attendance Function including SMS, Workcode, DST, Scheduled Bell, etc.
- Access Control Interface for Electric Lock, Door Sensor, Exit Button, alarm, Door Bell

SC103



SC403



SC503



SCR100

- Card Capacity: 30.000
- Log Capacity: 50.000
- Communication: TCP/IP, RS485, RS232, USB-host
- Wiegand Input and Output
- Access Control Interface for Electric Lock, Door Sensor, Exit Button, Alarm



SC700

- 3" TFT Touch Screen
- Pull SDK
- Card Capacity: 30.000
- Log Capacity: 100.000
- Communication: TCP/IP, USB-host
- Wiegand Input and Output
- Access Control Interface for Electric Lock, Door Sensor, Exit Button, Alarm



- Metal Casing with IP65 Waterproof
- Card Capacity: 1.000
- Log Capacity : N/A
- Password Capacity: 8 Groups
- Wiegand Output
- Access Control Interface for Electric Lock, Door Sensor, Exit Button, Alarm, Door Bell
- 1 ea Aux. input for linkage function

R6



SKW-V2



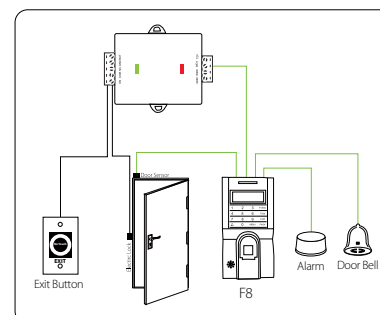
SKW-H2



SRB



Security Relay Box (SRB) is a relay switch that controls electric lock and exit button providing a higher security level for access control. It is installed in a secured place and connected to standalone access control devices by Wiegand out.



Access Controllers

Centralized administration and web-based infrastructures reduce a company's IT costs and allows an easy management of all access points from one single location. For this purpose, ZKTeco offers a whole range of access control panels, that can manage from 1 to 4 doors using either or both proximity and fingerprint identification.

RFID Access Controllers

	C3-100	C3-200	C3-400
			
Card Capacity:	30,000	30,000	30,000
Event Capacity:	100,000	100,000	100,000
Communication:	TCP/IP, RS485	TCP/IP, RS485	TCP/IP, RS485
Wiegand Input:	2ea	4ea	4ea
Aux.output:	1ea	2ea	4ea
Aux.input:	none	2ea	4ea

RFID & Fingerprint Access Controllers

	inBIO160	inBIO260	inBIO460
			
Card Capacity:	30,000	30,000	30,000
Fingerprint Capacity:	3,000 (optional 20,000)	3,000 (optional 20,000)	3,000 (optional 20,000)
Event Capacity:	100,000	100,000	100,000
Communication:	TCP/IP, RS485	TCP/IP, RS485	TCP/IP, RS485
Wiegand Input:	2ea	4ea	4ea
Aux.output:	1ea	2ea	4ea
Aux.input:	1ea	2ea	4ea
Aux:	RS485 for Fingerprint Reader	RS485 for Fingerprint Reader	RS485 for Fingerprint Reader

Elevator Panel

The EC10 controller offers the user better security, scalability and versatility in an elevator control system. The access to each floor can be controlled according to different methods of verification, by fingerprint, proximity or pin. Furthermore one can program access control time-tables, thereby creating different access levels.

All of these functionalities are particularly recommended for a company's visitor management.

EC10

Elevator control and more



Number of Floors	10 Floors
Number of Supported EX16	3
Communication to EX16	RS485
Number of Reaser Supported	1 Reader
Type of Readers Supported	Wiegand readers or RS485 readers
Fingerprint Capacity	3.000
RFID Card Capacity	30.000
Event Capacity	100.000
Communication to PC	TCP/IP or RS485
CUP	32 bit 400MHz
RAM/Flash Memory	32M/128M
Power Supply	12V DC
Operating Temp.	0 - 45 °C
Dimension & Weight	242mmx95mmx60mm 0.8Kg

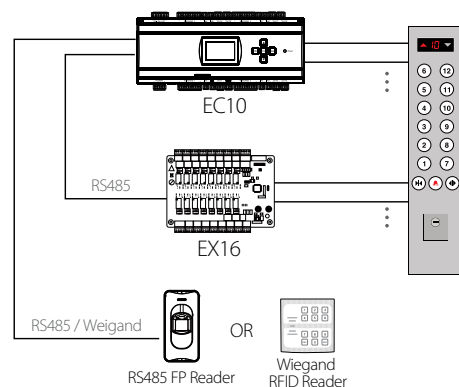
EX16

EC10 offers a solution in buildings that manages up to 10 floors, although this can be expanded with up to 3 extension panels EX16, which cover 16 further floors each. This means our solution can manage up to 58 floors with the installation of one single control system.

Extension Board to Control 16 floors



Elevator Control System



External Readers

ZKTeco's wide range of external readers include waterproof IP65 rated fingerprint, proximity and password ID models, which allow you to connect indoor terminals and controllers with an outdoor access feature, connecting these directly by Wiegand or RS485.

Fingerprint Readers

FR1200

- IP65 Waterproof
- Fingerprint Identification
- Read 125K Proximity Card
13.56MHz Mifare Card Reader
- Communication to Master
Controller: RS485



FR1300

- Keypad supports Password
- Fingerprint Identification
- Read 125K Proximity Card
13.56MHz Mifare Card Reader
- Communication to Master
Controller: RS485



RFID Readers

- Waterproof
- 125KHz Proximity/13.56MHz Mifare Card Reader
- 26bit/34bit Wiegand Out
- Extend LED/Buzzer Control

KR1000 Long Range Reader

- Waterproof
- 125KHz Proximity Card Reader
- 60cm Read Range
- Buzzer Control
- 26bit Wiegand Out



KR500E/M



KR501E/M



KR502E/M



KR503E/M



KR600E/M



KR601E/M



KR602E/M

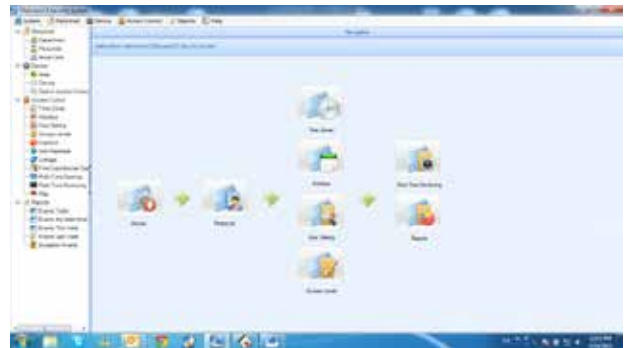
Software Management

ZKAccess

Access Control Software ZKAccess3.5

Our ZKAccess 3.5 is an Access Control software application that offers complete flexibility in programming to achieve any access control performance your solution may require.

The ZKAccess system goes a step beyond conventional access control systems, by combining unique RFID and biometric identification. With its intuitive easy-to-use GUI and wizard type settings, ZKAccess provides comprehensive access control security for small-to-medium sized businesses and enterprise-level systems.



ZKAccess includes a time and attendance feature to allow administrator to define timetables, shifts, schedules, and holiday settings. It provides compact and easy-to-use report and In/Out board features.



The system controls up to 400 doors and allows integration with various database systems, event monitoring, interlock, linkage, passage mode, first-card opening, multi-card opening, visual map, T&A management and reporting features.

Third Party software integration

ZKTeco can provide a free SDK with open libraries to be used with third party access control systems. In this way, the needs for software developers to merge different Access Control solutions in one complete and integrated solution are solved.



Features and Applications



Embedded Internal Biometric Identification:

The FR Series readers transmit fingerprint templates to inBIO via RS485 that matches fingerprints with templates stored in the database. Wiegand inputs are also provided for traditional RFID readers.



Complete Access Control:

Apart from standard access control features for controlling door locks, easily programmable auxiliary relays can be used for additional control and interface to lights, alarms, intrusion detection panels, or even extra locking devices or gate controllers.



Communication:

The access controllers can be easily integrated into your network and support both TCP/IP and RS-485 communication. The auto-discovery tool can manage the setting and modification of network parameters in a fast and efficient manner.



Options:

Three different sizes of controllers can suit various project needs and reduce the cost of required floorspace. 1-way and 2-way models can be mixed and matched in optimized system architecture.



Capacity:

The system supports up to 3000 fingerprint templates, 30,000 badge users and stores up to 100,000 events and transactions. Data is preserved if there is power outage. Controller can continue operating if network connection is interrupted.



Built-in Advanced

Access Control Functions:

Anti-passback, First-Card opening, Multi-Card opening, Duress Password Entry, and Auxiliary input/output linkages are built into controller firmware.



Cost Efficient Management:

New controller features allows you to remotely upgrade firmware of systems out in the field, ensuring that you can manage and expand your investment value without any complex third party tools.



For Software Developers:

Free SDK is available for integrators and OEMs (optional Push SDK for Real-Time environments) to integrate the controller with their own or existing security or personnel management applications. Upon demand, ZKTeco can customize firmware to meet any customer requirements.

Applications



Building Entrance



Time & Attendance



Visitor Management



Sports and leisure facilities




Arena Entrance Events



Vehicle Access

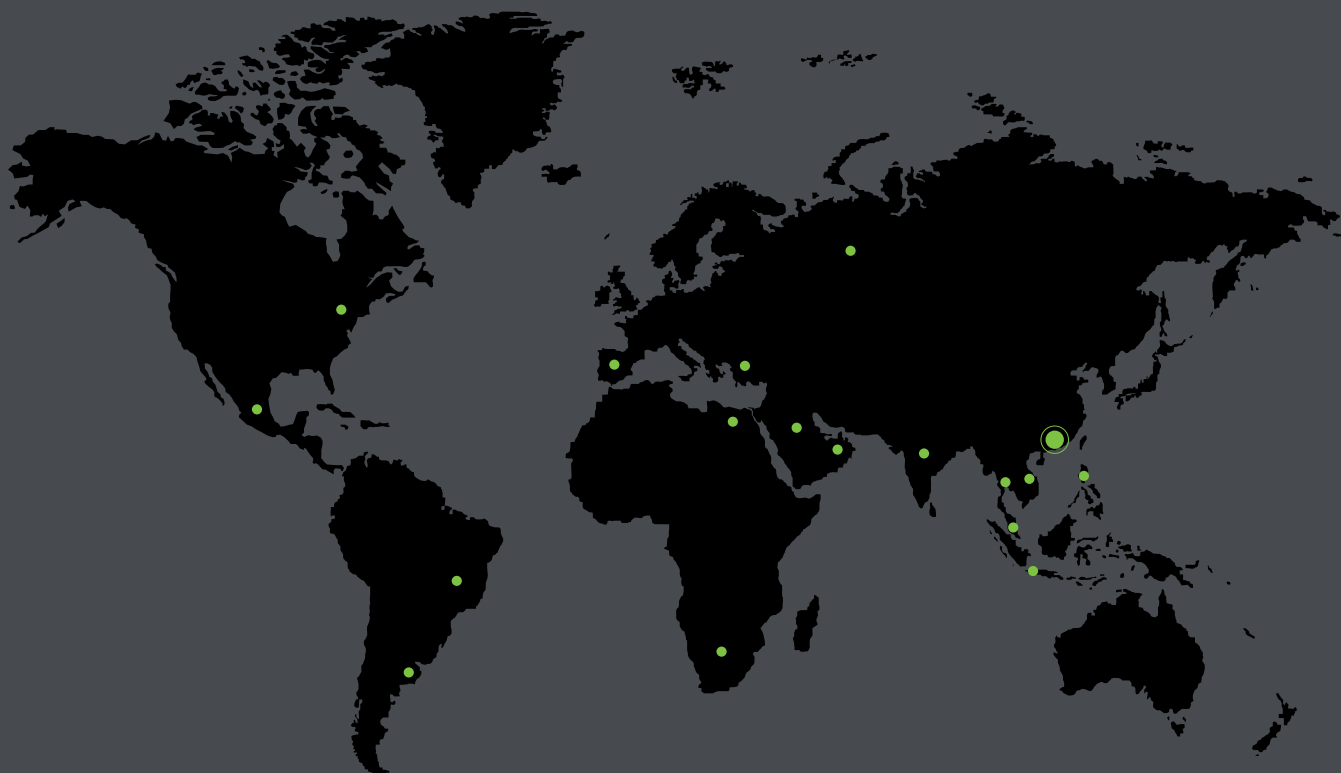
Compatibility Table

	Terminal	Security Relay Box	FR1200	Standalone SDK	Pull SDK
	Multibio 700	■	■	■	×
	Fac700	■	■	■	×
	TF1700	■	■	■	▲
	TF1600	×	■	×	■
	F18	×	■	■	×
	F8-T	■	■	■	▲
	F9	■	■	■	▲
	MA300	■	■	■	×
	MA500	×	■	×	■
	SC700	×	×	▲	■
	SC SERIES	×	×	■	▲
	SCR100	×	×	■	▲

Standard = ■

Optional = ▲

Not available = ×



ZKTeco Europe S.R.L.
Av. Camino de lo Cortao, 10. Nave 1.
28703 S.S. de los Reyes, Madrid. SPAIN
Tel: +34 916 532 891
Web: www.zkteco.eu

© Copyright 2014. ZKTeco Inc. ZKTeco Logo is a registered trademark of ZKTeco or a related company. All other product and company names mentioned are used for identification purposes only and may be the trademarks of their respective owners. All specifications are subject to change without notice. All rights reserved.